

Quarterly YAM

JULY • AUGUST • SEPTEMBER • SUMMER ISSUE 2006

2006 San Diego Taiwanese American Heritage Week

The seventh annual San Diego Taiwanese American Heritage Week (TAHW) was successfully held from May 13 through May 23. The theme of this year's celebration was multicultural art. In the afternoon of May 13, a lecture by Ms. Yiheng Yvonne Wu entitled "Reaching Home with Music: a young emigrant's exploration of Taiwan's political past" opened this year's celebration. Later in the afternoon, San Diego Taiwanese Culture Association hosted a food fair that featured selections of more than 30 traditional Taiwanese cuisines. In the evening of May 13, at the opening ceremony 2006 High School Scholarships and other awards were presented (please see the Honors and Awards Committee's Report inside for details). Afterwards, an outstanding concert was performed by an accomplished musician of Taiwanese descent, Jen Shyu. Her special renditions of traditional Taiwanese folk songs thrilled everyone in attendance. On May 14, SDTCA presented an entertaining program to celebrate this year's Mother's Day, and the "Mother of the Year" was awarded to Mrs. Chien-Chien Lin. On May 15, at UCSD Price Center Theater, UCSD Chancellor Marye Anne Fox along with Professors Ming T. Tsuang and Charles Tu presided the inauguration ceremony for the Taiwanese Studies Lecture Series. On May 20, various Asian Pacific ethnic communities presented entertaining stage performances at TACC to showcase their unique culture and heritage. This year's feature performance group was the Hung Sheng Lion Dance Theater from Taiwan. A captivating and rousing performance at Sherwood Auditorium in La Jolla by this highly acclaimed group successfully concluded this year's TAHW celebration.

Vol. 8 No. 2

Publisher: TAFSD

Editor-in-Chief: Ted Fan,

Edward Cheng

Executive Editor: Poi Su

English Editor: Ching-Chih Chen

Art Designers: Poi Su

Contributing Writers:

Kun-Mu Chen, Ted Fan, Echo Liu,

Edward Cheng, Ed Wung

For free subscription, please contact TACC:

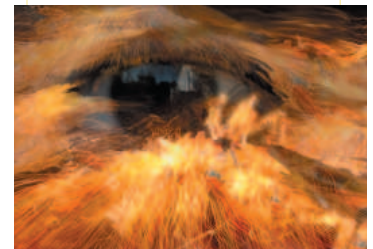
7170 Convoy Court,
San Diego, CA 92111

Tel: 858-560-8884

Fax: 858-560-9276

Website: www.taiwancenter.com

E-mail: info@taiwancenter.com



Artist Echo Lew's "See the Light" series. His paintings will be in exhibition at TACC art gallery in September 2006 (Please see inside for details).



Food Fair Fun



Kyu Jeung Lee performed Korean Jin Do Drum Dance at the Multicultural Night



Lily Dance Group Performed Taiwanese Aboriginal Dance at the Multicultural Night

REPORT FROM THE TAFSD BOARD OF DIRECTORS

The following is a report from the Board of Directors of the Taiwanese American Foundation of San Diego (referred to as the Board hereafter) for the three-month period ending May 31, 2006:

1. The 2006 Taiwanese American Heritage Week was held from May 13th to 23rd. The activities included two concerts, two lectures, one food fair, one karaoke competition, one lion dance troupe and, for the first time, a multicultural performance that featured cast members from many Asian groups to celebrate the Asian Pacific American Heritage Month. The Foundation would like to thank everyone who participated.

2. The UCSD Taiwan Studies Lecture Series held its inauguration ceremony at UCSD on May 15th. Attending dignitaries included Marye Anne Fox, Chancellor of UCSD. The Foundation, representing the many generous donors from our community, presented a check of \$100,000 to Chancellor Fox.

3. For 2006, the Foundation has decided to forgo the summer fundraising event and move the year end fundraising to November time frame.

Honors & Awards Committee Announcement

High School Scholarship

This year, TAFSD has granted scholarship awards of \$500 each to four college-bound high school seniors of San Diego County. A total of 51 applicants competed for the awards. After a careful review of the applications, the scholarship committee selected the following recipients: Rebeccah Marlene Kersteen (El Capitan High School), Michael Mawa Kimani (Helix Charter high School), Alyssa Mangabay (Oceanside High School), Praveen Rustam Subramani (La Jolla High School). The recipients and their families were invited to attend the May 13th award presentation, which was a part of the TAWH's opening ceremony at TACC.

Taiwan Trip Award

TAFSD presents annually a Taiwan Trip Award to a student selected from the Greater San Diego Science and Engineering Fair in March. The Award winner will receive up to \$2,000 for a sponsored trip to Taiwan. The Award offers the winner an excellent opportunity to learn the richness and diversity of the Taiwanese culture. This year's winner is Jessica Chaisson of Mt. Miguel High School.

Kuan Chen Memorial "Mother of the Year" Award

In 2002, TAFSD established a "Kuan Chen Memorial Fund" and began to grant a \$2000 cash award annually to a deserving special mother in the Greater San Diego area. This year's recipient of the Award is Mrs. Chien-Chien Lin, who is honored in the 2006 Mother's Day celebration.

Mao-Chun Memorial Fund

Mao-Chun Memorial Fund is to provide assistance to children with cerebral palsy in the greater San Diego area, and will award \$700 cash each year to one cerebral palsy suffering child under 14, or an organization engaged in the therapy, caring, or education of children with cerebral palsy. This year, the fund was awarded to United Cerebral Palsy organization in San Diego.

Understanding Science Seminar Series (V)

Electromagnetic Waves and Applications

Date: 8/13/06, Sunday, 3 PM

Place: Auditorium, Taiwanese American Community Center

Lecturer: Kun-Mu Chen



Kun-Mu Chen graduated (B.S.) at the top of his class in 1955 from the Department of Electrical Engineering, National Taiwan University. In 1957 he was selected as the recipient of C.T. Loo Fellowship to attend Harvard University to pursue the graduate study. In 1960 he earned a Ph.D. degree in Applied Physics and then went to Michigan to start his teaching and research career. He was at the University of Michigan, Ann Arbor, first and then in 1964 moved to Michigan State University at East Lansing. At Michigan State University he was promoted to a full professor rank at the age of 34, and when he retired in 1999 he held the title of an endowed chair professorship.

professor at Tohoku University in Japan, National Taiwan University and National Chiao Tung University in Taiwan, and a number of famous universities in China.

Professor Chen is a Fellow of both Institute of Electric and Electronic Engineers (IEEE), and American Association of Advancement of Sciences (AAAS). He is a nationally and internationally known scholar in electromagnetics. Before residing in San Diego after retirement, Professor Chen and his wife, Shun-Shun, had helped many Taiwanese students coming to study at Michigan State University for many years. Their home at East Lansing was a “Taiwan Center,” always welcoming Taiwanese students to spend their weekends.

During his teaching and research career of 40 years, Professor Chen has produced 46 Ph.D. students, about a quarter of them were from Taiwan. He has published more than 300 scientific papers, and acquired 54 research grants from various federal agencies. His career was recognized and honored for numerous awards including Outstanding Faculty Award, Excellent Research Award, and others. One of the awards is the Science and Engineering Achievement Award from the Taiwanese American Foundation (Los Angeles) in 1984. He was a visiting

Lecture on this topic Professor Chen will use layman language to explain and discuss the physics of electromagnetic wave and its applications. The main topics will include: (1) what is electromagnetic wave? (2) various electromagnetic wave devices in our daily life; (3) potential biological effects of electromagnetic wave; (4) biomedical applications of electromagnetic wave, and (5) electromagnetic wave and radars.

**TAFSD Key Financial Information
Year to Date ended 3/31/2006**

| | General Fund | Permanent Site Fund | Kuan Chen Memorial Fund | Children Speical Needs Fund | Total |
|-----------------------|--------------|---------------------|-------------------------|-----------------------------|-------------|
| Contribution | 25,928 | 0 | 0 | 0 | \$25,928 |
| Other Support | 6,873 | 0 | 0 | 0 | \$6,873 |
| Investment Income | | 69,481 | 2,100 | 296 | \$71,877 |
| Expenses (-) | (55,532) | 0 | 0 | 0 | \$(55,532) |
| Net Operating Surplus | (22,731) | 69,481 | 2,100 | 296 | \$49,146 |
| Fund Balance | \$507,313 | \$2,607,198 | \$58,807 | \$8,635 | \$3,181,953 |

Art Exhibiton**Echo Lew's Art Exhibition**

Artist: Echo Lew

Date and Time: 09/01/06 ~ 09/30/06

Place: TACC Art Exhibition at TACC Gallery



Echo Lew was born in Kaohsiung, Taiwan, in 1951. During his formative years, Echo has developed a great interest in modern European art and began exploring a wide range of techniques and styles in his art work. Although he has never been formally trained, he has taken lessons from famous artists including Ching-Jung Chen, an art professor at National Taiwan Normal University. Echo continued in self studies by taking the opportunity to travel globally as an intern on a merchant ship. During his travels, Echo developed his artistic styles by visiting museums and recording his thoughts and

emotions on canvas.

Over the years as a part-time artist, Echo has attempted to capture the beauty of human emotions in an abstract form. In the "See the Light" series, for example, the radiance of light symbolizes hope, one of our most precious emotions. While we struggle, as represented in the apparently chaotic composition, our hope is often intensified as it becomes more important to us. The brilliance of hope, especially in the midst of severe struggles, is the essence of Echo's "See the Light" series.

.....

*** HEALTH SEMINAR ***

8/12/06, Saturday, 2:0 pm

Subject: "Navigating the Health Care System "

Speaker: Tammy Lin

Outline:

- I. Introduction
- II. Selecting a Primary Care Physician
- III. Preparing for Your Visits
- IV. How to Get the Most Out of Your Visits
- V. Working with Specialists and Other Health Professionals
- VI. Health Care Maintenance
- VII. Conclusion

Tammy Lin, M.D., M.P.H., is a graduate of the University of Michigan Medical School. She completed her residency and chief residency at Washington University in St. Louis. She obtained a Master's of Public Health while serving as a Robert Wood Johnson Clinical Scholar

at the University of Washington in Seattle. Her interests include evaluating the most effective methods of disseminating health-related information to physicians and patients, disease prevention, obesity, and health issues which disproportionately affect the Asian American and Asian/Pacific Islander population. She is currently an Assistant Professor of Internal Medicine at the University of California, San Diego Medical Center. She teaches medical students and residents and practices as part of the Perlman Internal Medicine Group at Thornton Hospital in La Jolla, CA.

.....

*** Book Club ***

7/15/06, Saturday, 7:00 pm

Speaker: Seng-Eng Shih
Place: TACC Conference Room
Topic: Explorers of Meiji Japan in Taiwan
Author: Michihiko Yamamoto

The suthor discusses three Japanese explorer in Taiwan during the half century of Japanese colonial rule form 1895 to 1945

.....

*** LIFE SEMINAR ***

7/8/06, Saturday, 1:30 pm

Subject: "How to choose the right foods that can make you live longer and stronger?"

Host: Hue-Hua Ann Chen
Sponsor: Amy Liu

8/19/06, Saturday, 1:30 pm

Subject: "The Healthy Way to do."

Host: Carlo Lin

.....

*** TACC DANCE PARTY ***

8/12/06, Saturday, 7:00 pm

~ Dance Party
Place: TACC Auditorium
Hosts: Hui-Yu Pai & Li-Shu Chen
Enjoy an evening of ballroom dancing.

JULY ACTIVITIES

| SUN | MON | TUE | WED | THU | FRI | SAT |
|---------------------------------|----------------------------|--|--|--|--|--|
| 2 Chinese Chess Club | 3 CLOSED | 4 Aerobic Class Hawaii Dance Club (2pm) | 5 Int. Japanese Class Senior Group Bridge Club Tai Ji Quan Class | 6 Calligraphy Club Line Dance Club | 7 Aerobic Class Women & Friends Club English Class Kendo Class Beg. Taiwanese Language | 8 Yoga Class Taiwanese Opera Club Zither Class Life Seminar (1:30pm) |
| 9 Chinese Chess Club | 10 CLOSED | 11 Aerobic Class Hawaii Dance Club (2pm) Folk Dance Club (7pm) | 12 Int. Japanese Class Senior Group Bridge Club Tai Ji Quan Class | 13 Calligraphy Club Line Dance Club | 14 Aerobic Class Women & Friends Club English Class Kendo Class Beg. Taiwanese Language | 15 Yoga Class Taiwanese Opera Club Zither Class Book Club |
| 16 Chinese Chess Club | 17 CLOSED | 18 Aerobic Class Hawaii Dance Club Folk Dance Club | 19 Int. Japanese Class Senior Group Bridge Club Tai Ji Quan Class | 20 Calligraphy Club Line Dance Club | 21 Aerobic Class Women & Friends Club English Class Kendo Class Beg. Taiwanese Language | 22 Yoga Class Taiwanese Opera Club Zither Class |
| 23 Chinese Chess Club | 24 CLOSED | 25 Aerobic Class Hawaii Dance Club Folk Dance Club | 26 Int. Japanese Class Senior Group Bridge Club Tai Ji Quan Class | 27 Calligraphy Club Line Dance Club | 28 Aerobic Class Women & Friends Club English Class Kendo Class Beg. Taiwanese Language | 29 Yoga Class Taiwanese Opera Club Zither Class |

AUGUST ACTIVITIES

| SUN | MON | TUE | WED | THU | FRI | SAT |
|---|----------------------------|---|---|--|--|---|
| 30 Chinese Chess Club | 31 CLOSED | 1 Aerobic Class Hawaii Dance Club (2pm) Folk Dance Club (7pm) | 2 Int. Japanese Class Senior Group Bridge Club Tai Ji Quan Class | 3 Calligraphy Club Line Dance Club | 4 Aerobic Class Women & Friends Club English Class Kendo Class Beg. Taiwanese Language | 5 Yoga Class Zither Class Taiwanese Opera Club |
| 6 Chinese Chess Club | 7 CLOSED | 8 Aerobic Class Hawaii Dance Club Folk Dance Club | 9 Int. Japanese Class Senior Group Bridge Club Tai Ji Quan Class | 10 Calligraphy Club Line Dance Club | 11 Aerobic Class Women & Friends Club English Class Kendo Class Beg. Taiwanese Language | 12 Yoga Class ZitherClass Taiwanese Opera Club Health Seminar (2:00pm) Dance Party (7:00pm) |
| 13 Chinese Chess Club Understanding Science Seminar (V) | 14 CLOSED | 15 Aerobic Class Hawaii Dance Club Folk Dance Club | 16 Int. Japanese Class Senior Group Bridge Club Tai Ji Quan Class | 17 Calligraphy Club Line Dance Club | 18 Aerobic Class Women & Friends Club English Class Kendo Class Beg. Taiwanese Language | 19 Yoga Class Taiwanese Opera Club Zither Class Life Seminar (1:30pm) |
| 20 Chinese Chess Club | 21 CLOSED | 22 Aerobic Class Hawaii Dance Club | 23 Int. Japanese Class Senior Group Bridge Club Tai Ji Quan Class | 24 Calligraphy Club Line Dance Club | 25 Aerobic Class Women & Friends Club English Class Kendo Class Beg. Taiwanese Language | 26 Yoga Class Taiwanese Opera Club Zither Class |

SEPTEMBER ACTIVITIES

| SUN | MON | TUE | WED | THU | FRI | SAT |
|---------------------------------|----------------------------|--|--|--|--|---|
| 27 Chinese Chess Club | 28 CLOSED | 29 Aerobic Class Hawaii Dance Club (2pm) Folk Dance Club (7pm) | 30 Int. Japanese Class Senior Group Bridge Club Tai Ji Quan Class | 31 Calligraphy Club Line Dance Club | 1 Aerobic Class Women & Friends Club English Class Kendo Class Beg. Taiwanese Language Echo Lew's Exhibition | 2 Yoga Class Taiwanese Opera Club Zither Class |
| 3 Chinese Chess Club | 4 CLOSED | 5 Aerobic Class Hawaii Dance Club Folk Dance Club | 6 Int. Japanese Class Senior Group Bridge Club Tai Ji Quan Class | 7 Calligraphy Club Line Dance Club | 8 Aerobic Class Women & Friends Club English Class Kendo Class Beg. Taiwanese Language | 9 Yoga Class Taiwanese Opera Club Zither Class |
| 10 Chinese Chess Club | 11 CLOSED | 12 Aerobic Class Hawaii Dance Club Folk Dance Club | 13 Int. Japanese Class Senior Group Bridge Club Tai Ji Quan Class | 14 Calligraphy Club Line Dance Club | 15 Aerobic Class Women & Friends Club English Class Kendo Class Beg. Taiwanese Language | 16 Yoga Class Taiwanese Opera Club Zither Class |
| 17 Chinese Chess Club | 18 CLOSED | 19 Aerobic Class Hawaii Dance Club Folk Dance Club | 20 Int. Japanese Class Senior Group Bridge Club Tai Ji Quan Class | 21 Calligraphy Club Line Dance Club | 22 Aerobic Class Women & Friends Club English Class Kendo Class Beg. Taiwanese Language | 23 Yoga Class Taiwanese Opera Club Zither Class |
| 24 Chinese Chess Club | 25 CLOSED | 26 Aerobic Class Hawaii Dance Club Folk Dance Club | 27 Int. Japanese Class Senior Group Bridge Club Tai Ji Quan Class | 28 Calligraphy Club Line Dance Club | 29 Aerobic Class Women & Friends Club English Class Kendo Class Beg. Taiwanese Language | 30 Yoga Class Taiwanese Opera Club Zither Class |